

Ready in 8 months

SINGLE STORY LOCK OFF VILLA: F\$585,000 (600m2 Lot | Construction | Furnishings)



ESTIMATED 50% SHARE INCOME FORCAST (Annual)

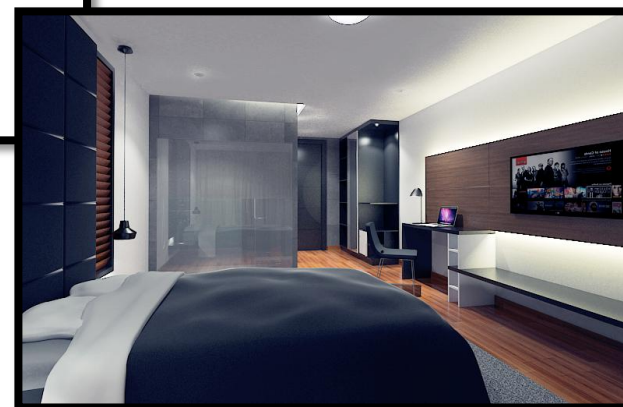
| @ | Varying Indicative Rates (per night) | | | | | |
|-----|--------------------------------------|-----------|-----------|-----------|-----------|-----------|
| | \$ 300 | \$ 350 | \$ 400 | \$ 450 | \$ 500 | \$ 550 |
| 30% | \$ 16,425 | \$ 19,163 | \$ 21,900 | \$ 24,638 | \$ 27,375 | \$ 30,113 |
| 40% | \$ 21,900 | \$ 25,550 | \$ 29,200 | \$ 32,850 | \$ 36,500 | \$ 40,150 |
| 50% | \$ 27,375 | \$ 31,938 | \$ 36,500 | \$ 41,063 | \$ 45,625 | \$ 50,188 |
| 60% | \$ 32,850 | \$ 38,325 | \$ 43,800 | \$ 49,275 | \$ 54,750 | \$ 60,225 |
| 70% | \$ 38,325 | \$ 44,713 | \$ 51,100 | \$ 57,488 | \$ 63,875 | \$ 70,263 |
| 80% | \$ 43,800 | \$ 51,100 | \$ 58,400 | \$ 65,700 | \$ 73,000 | \$ 80,300 |

INVESTMENT

| | |
|-------------------------|-------------------|
| LOT PRICE | \$ 240,000 |
| BUILDING COST | \$ 345,000 |
| TOTAL INVESTMENT | \$ 585,000 |

Ready in 8 months

SINGLE STOREY LOCK OFF VILLA: F\$585,000 (600m2 Lot | Construction | Furnishings)



audle Pacific
ENGINEERING
ADVANCED ENGINEERING AND CONSTRUCTION

- ✓ 1 Ensuite Master Bedroom
- ✓ 2 Key Unit (2 rentable rooms)
- ✓ 1 self contained and 1 Ensuite room)
- ✓ Outdoor Terrace Areas