

Ready in 8 months

2 STOREY LOCK OFF VILLA: F\$1,207,000 (1,000m2 Lot | Construction | Furnishings)



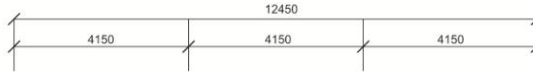
INVESTMENT	
LOT PRICE	\$ 375,000
BUILDING COST	\$ 832,000
TOTAL INVESTMENT	\$ 1,207,000

ESTIMATED 50% SHARE INCOME FORCAST (Annual)						
@	Varying Indicative Rates (per night)					
	\$ 900	\$ 950	\$ 1,000	\$ 1,050	\$ 1,100	\$ 1,200
30%	\$ 49,275	\$ 52,013	\$ 54,750	\$ 57,488	\$ 60,225	\$ 65,700
40%	\$ 65,700	\$ 69,350	\$ 73,000	\$ 76,650	\$ 80,300	\$ 87,600
50%	\$ 82,125	\$ 86,688	\$ 91,250	\$ 95,813	\$100,375	\$109,500
60%	\$ 98,550	\$104,025	\$109,500	\$114,975	\$120,450	\$131,400
70%	\$114,975	\$121,363	\$127,750	\$134,138	\$140,525	\$153,300
80%	\$131,400	\$138,700	\$146,000	\$153,300	\$160,600	\$175,200

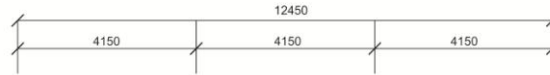
Ready in 8 months

2 STOREY LOCK OFF VILLA: F\$1,207,000 (1,000m² Lot | Construction | Furnishings)

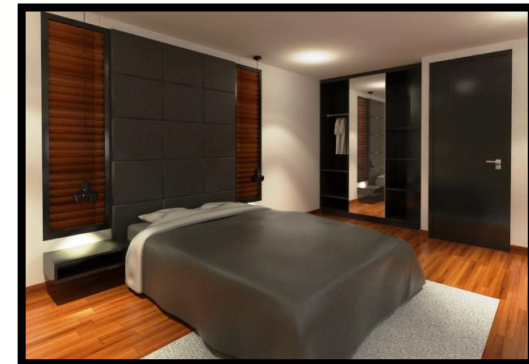
Ground Floor



Second Floor



audle Pacific
ENGINEERING
ADVANCED ENGINEERING AND CONSTRUCTION



- ✓ 2 bedroom on each floor with Lock Off
 - ✓ All Bedrooms Ensuite
 - ✓ 4 Key Unit (4 rentable rooms)
 - ✓ 2 self contained and 2 Ensuite Rooms
 - ✓ Outdoor Terrace Areas